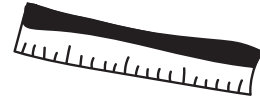


Measure Mini feet



Don't leave picking the right shoe size to luck.
Follow our guide...

1 Print the chart on the next page. **Don't forget to set your printer to 100% or 'do not scale'.**

5 Repeat for the other foot (if different then use the measurements from the biggest foot).

2 Place the chart on a hard floor.

6 Go to boden.com to find the right shoe size.

3 Pop one foot on the chart, stand up nice and tall with the back of the heel against the line (no hopping, please).

7 Head out to play.

4 Measure to the end of the big toe. Jot down the measurement.

Left foot
_____ cm

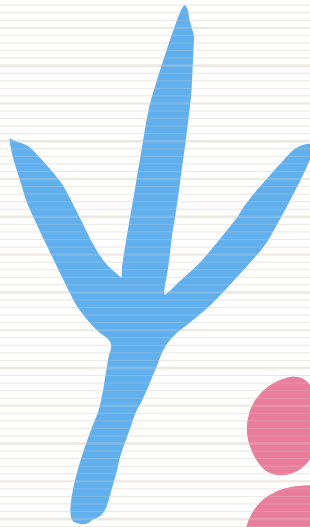
Right foot
_____ cm

A yellow rectangular notepad with rounded corners. A black pencil is shown writing a wavy line at the bottom right. The notepad contains two sections for recording measurements: 'Left foot' followed by a blank line and 'cm', and 'Right foot' followed by a blank line and 'cm'.

MiniBoden

26
25
24
23
22
21
20
19
18
17
16
15
14
13
12
11
10
9
8
7
6
5
4
3
2
1
cm

**Who's the closest
to your size?**



Pheasant
7cm



Dog
4cm



Deer
5cm



Badger
6cm



Horse
12cm

PLACE THE BACK OF YOUR HEEL TO THIS LINE